



ANDOVER HEALTHCARE



Cohesive Bandages

COMPANY PROFILE..... 3

SELECTION GUIDE..... 4

HOW TO APPLY COFLEX PRODUCTS..... 5

COFLEX..... 6-7

COFLEX MED..... 8-9

COFLEX NL..... 10-11

COFLEX LF2..... 12-13

HCPCS CODES..... 14

APPLICATIONS..... 15



COMPANY PROFILE

Andover Healthcare, a leading US manufacturer of cohesive bandages and compression kits, is now part of Milliken Healthcare. The combination of the two companies gives clinicians a broader suite of products along the continuum of patient care. Together, we bring unique research and development resources: Milliken with unparalleled textile and Active Fluid Management® expertise; Andover Healthcare with leading compression capabilities. With the courage to think big, we look forward to delivering healthcare innovations that will continue to positively impact the world around us and, most importantly, patient lives.



Cohesive Bandages That Meet Every Need:

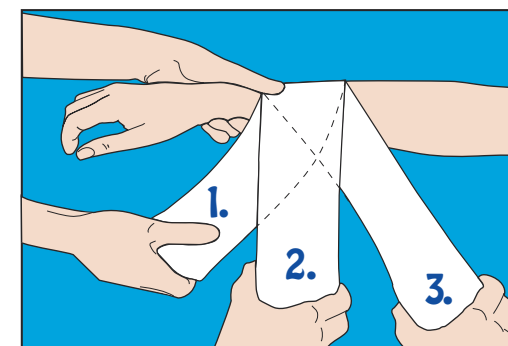
- ✓ Two options in both latex and non-latex
- ✓ Easy Hand Tear
- ✓ Kids prints available
- ✓ Consistent compression
- ✓ CoFlex® LF² sticks over wet dressings
- ✓ One of the largest manufacturers of cohesive bandages
- ✓ Cost savings over other leading brand
- ✓ Clinical support team
- ✓ Made in USA quality



Why are CoFlex Products the Best Bandage Choice?

- ✓ Available latex or non-latex
- ✓ Self-adhering – sticks to itself, not to hair or skin
- ✓ Available with Easy Hand Tear patented technology – no scissors needed
- ✓ Controlled compression - will not constrict over time
- ✓ Made in the USA – quality products
- ✓ Wide variety of sizes, colors, prints & benefit options

Depending on the specific application for which it is being used, different compression levels of the bandage will be needed. You control the desired tension level. Once wrapped, the bandage will not loosen or tighten and will remain secure.



1. No to low tension
2. Medium tension
3. High tension

LATEX

Co-Flex®

- ✓ Economical
- ✓ Variety of colors
- ✓ Quick Stick

CoFlex® Med

- ✓ Easy Hand Tear
- ✓ Variety of colors
- ✓ Glitter
- ✓ Quick Stick
- ✓ Available sterile
- ✓ Patented technology

NON-LATEX

Co-Flex® NL

- ✓ Easy Hand Tear
- ✓ Variety of colors
- ✓ Prints
- ✓ Quick Stick
- ✓ Available sterile
- ✓ Patented technology

CoFlex® LF²

- ✓ Easy Hand Tear
- ✓ Variety of colors
- ✓ Quick stick
- ✓ Available sterile
- ✓ Comfortable foam layer
- ✓ Patented technology

This product selection guide is an informational resource to explain the 4 models of CoFlex and is not intended or implied to be a substitute for medical advice, diagnosis or treatment. All patients should consult their healthcare provider before making any decisions regarding compression therapy.



Co-Flex®

A FLEXIBLE COHESIVE BANDAGE



Available Colors

CoFlex® is available in single color cases or in two color packs for variety!



CoFlex® is the leader in cohesive bandages when it comes to quality and performance in an economical cohesive wrap. CoFlex's high-quality cohesive mix and linear elastics give comfortable controlled compression that won't slip or constrict over time like other economical bandages. Available in 13 colors and six sizes from 1" - 6", CoFlex® is a versatile bandage that can be used for a wide variety of applications.



- Key Features:**
- ✓ Controlled compression - will not constrict
 - ✓ No fasteners needed - sticks to itself
 - ✓ Lightweight and breathable
 - ✓ 10 lbs. of tensile strength
 - ✓ Available in a variety of colors
 - ✓ Made in the USA

*When ordering, please indicate catalog # and color code
For example, 3100TN-030 (XX = color code)
Most products are available in bulk packaging, call for details.*

Color Pack (CP)



6-Pack Includes One Each: Neon Pink, Blue, Purple, Light Blue, Neon Green, Red

Rainbowpack (RB)



6-Pack Includes One Each: Teal, Blue, White, Purple, Red, Green

Catalog #	Size	Rolls/Case	Colors	Catalog #	Size	Rolls/Case	Colors
3100XX-030	1" x 5 yds.	30		3300XX-024	3" x 5 yds.	24	
3150XX-048	1.5" x 5 yds.	48		3400XX-018	4" x 5 yds.	18	
3200XX-036	2" x 5 yds.	36		3600XX-012	6" x 5 yds.	12	

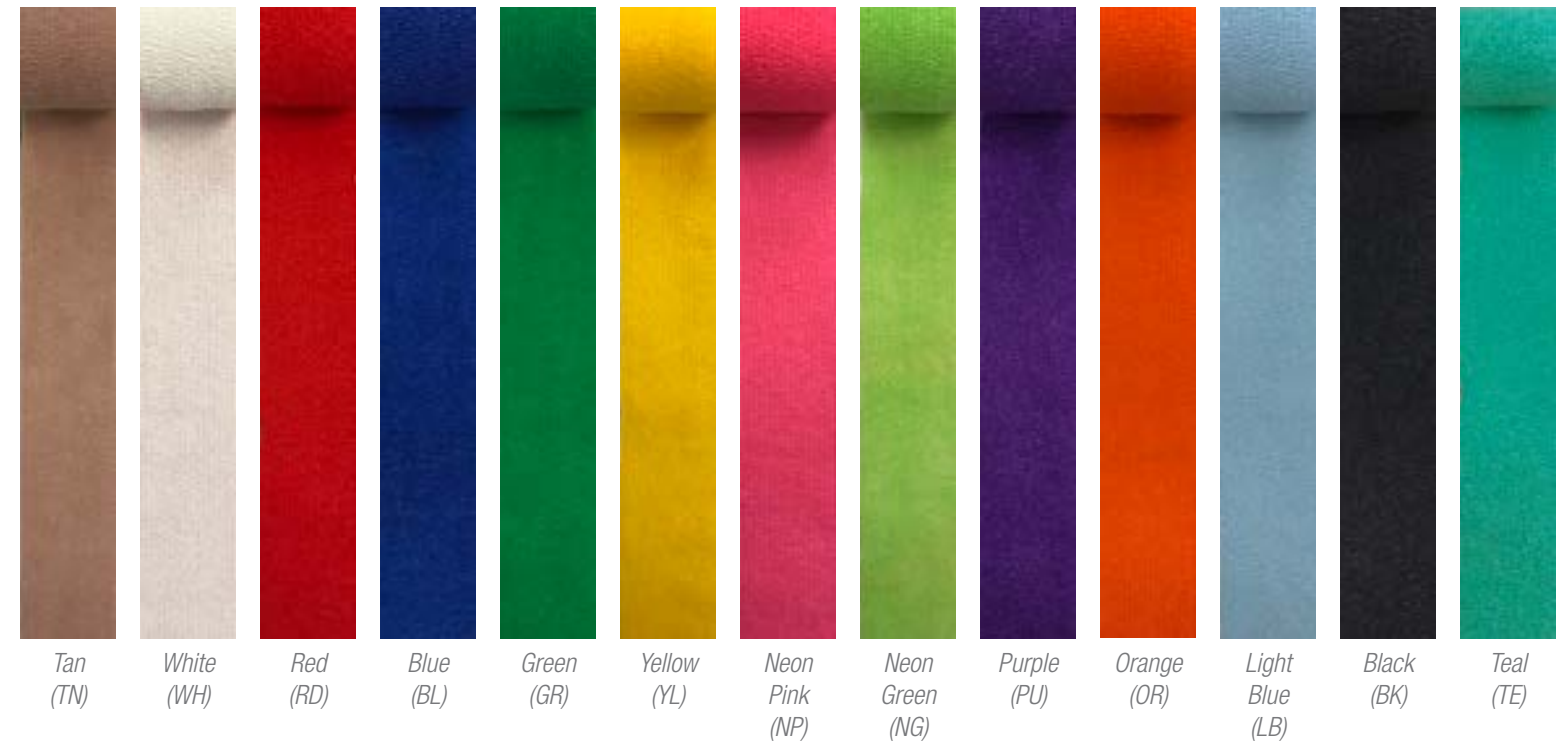
CoFlex® Med

A FLEXIBLE COHESIVE BANDAGE



Available Colors

CoFlex® Med is available in single color cases or in two color packs for variety!



CoFlex® Med is a self-adhering bandage that provides controlled compression with Easy Hand Tear patented technology for quick, easy application. It will not constrict once applied and provides non-slip support. Available in 13 colors in six sizes from 1" - 6". Also available sterile.

Key Features:

- ✓ Easy Hand Tear patented technology
- ✓ Controlled compression - will not constrict
- ✓ Adheres to itself, not skin or hair; no fasteners needed
- ✓ Sweat and water resistant
- ✓ 16 lbs. of tensile strength
- ✓ Made in the USA



When ordering, please indicate catalog # and color code
For example, 7100TN-030 (XX = color code)
Most products are available in bulk packaging, call for details.

Catalog #	Size	Rolls/Case	Catalog #	Size	Rolls/Case	Colors
7100XX-030	1" x 5 yds.	30	7300XX-024	3" x 5 yds.	24	
			7300(S)			(S) = sterile product/tan only
7150XX-048	1.5" x 5 yds.	48	7400XX-018	4" x 5 yds.	18	
			7400(S)			(S) = sterile product/tan only
7200XX-036	2" x 5 yds.	36	7600XX-012	6" x 5 yds.	12	
			7600(S)			(S) = sterile product/tan only

Color Pack (CP)



6-Pack Includes One Each: Neon Pink, Blue, Purple, Light Blue, Neon Green, Red

Rainbowpack (RB)



6-Pack Includes One Each: Teal, Blue, White, Purple, Red, Green

Glitter Pack (GP)



Add some fun to your patient's next visit with our Glitter Pack. It features the same performance as CoFlex Med, but with added aprkles for a little extra bling!

5-Pack Includes One Each: Pink Glitter, Red Glitter, Blue Glitter, Black Glitter, Purple Glitter

Available in 2" & 3"

Co-Flex[®] NL

A FLEXIBLE COHESIVE BANDAGE



CoFlex[®] NL is a non-latex self-adhering bandage that provides controlled compression with Easy Hand Tear patented technology for quick, easy application. Available in 11 colors and fun prints in six sizes from 1" - 6". Also available sterile.

Key Features:

- ✓ The healthcare market's #1 non-latex formula
- ✓ Easy Hand Tear patented technology
- ✓ Controlled compression - will not constrict
- ✓ 12 lbs. of tensile strength
- ✓ Available in fun prints & colors
- ✓ Made in the USA



When ordering, please indicate catalog # and color code
 For example, 5100TN-030 (XX = color code)
 Most products are available in bulk packaging, call for details.

Catalog #	Size	Rolls/Case	Catalog #	Size	Rolls/Case	Colors
5100XX-030	1" x 5 yds.	30	5300XX-024	3" x 5 yds.	24	
			5300(S)			(S) = sterile product/tan only
5150XX-048	1.5" x 5 yds.	48	5400XX-018	4" x 5 yds.	18	
			5400(S)			(S) = sterile product/tan only
5200XX-036	2" x 5 yds.	36	5600XX-012	6" x 5 yds.	12	
			5600(S)			(S) = sterile product/tan only

Available Colors

CoFlex[®] NL is available in single color cases or in five color packs for variety!



Tan (TN) White (WH) Red (RD) Blue (BL) Green (GN) Neon Pink (NP) Neon Green (NG) Purple (PU) Orange (OR) Light Blue (LB) Black (BK) Yellow (YL) Teal (TE)



Kid's Pack (KP)



4-Pack Includes One Each: Hearts, Dinosaurs, Cars & Trucks, Bumble Bees

Color Pack (CP)



6-Pack Includes One Each: Neon Pink, Blue, Purple, Light Blue, Neon Green, Red

Rainbowpack (RB)



6-Pack Includes One Each: Teal, Blue, White, Purple, Red, Green

Camo Colorpack (CMCP)



4-Pack Includes One Each: Camo Print on Light Blue, Pink, Orange, Green

Smiley Pack (SC)



4-Pack Includes One Each: Smiley on Lavender, Light Blue, Neon Pink, Yellow

CoFlex® LF²

NO LATEX FOAM BANDAGE



Available Colors

CoFlex® LF² is available in single color cases or a color pack for variety!

CoFlex® LF² is a non-latex, super-soft, self-adhering medical wrap used to secure wound dressings and give controlled compression without constricting. CoFlex's luxurious Cellular Foam technology is soft and cushioning to sensitive areas, and delivers the highest tensile strength of any medical wrap on the market. Its patented cohesive quick-stick technology sticks over wet dressings and has pain-free removal. Available in 7 colors in six sizes from 1" - 6". Also available sterile.

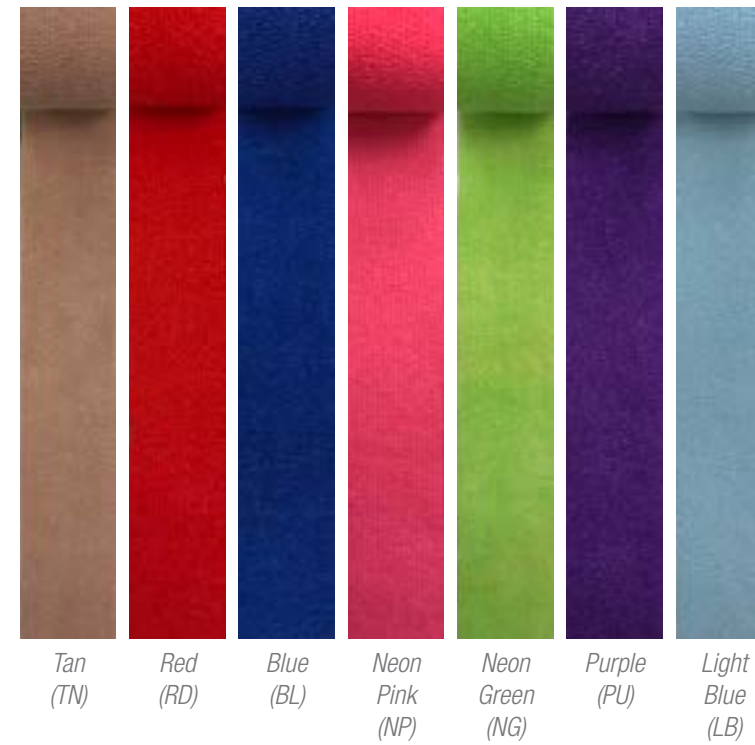


Key Features:

- ✓ Soft & comfortable - gentle on skin
- ✓ Patented non-latex technology
- ✓ Performs like latex - sticks directly to a wet dressing
- ✓ Easy Hand Tear patented technology
- ✓ 18 lbs. of tensile strength
- ✓ Made in the USA

When ordering, please indicate catalog # and color code
For example, 9100TN-030 (XX = color code)
Most products are available in bulk packaging, call for details.

Catalog #	Size	Rolls/Case	Catalog #	Size	Rolls/Case	Colors
9100XX-030	1" x 5 yds.	30	9300XX-024	3" x 5 yds.	24	
			9300(S)			(S) = sterile product/tan only
9150XX-048	1.5" x 5 yds.	48	9400XX-018	4" x 5 yds.	18	
			9400(S)			(S) = sterile product/tan only
9200XX-036 9200(S)	2" x 5 yds.	36	9600XX-012	6" x 5 yds.	12	
			9600(S)			(S) = sterile product/tan only



Color Pack (CP)



6-Pack Includes One Each: Neon Pink, Blue, Purple, Light Blue, Neon Green, Red



HCPCS Codes

HEALTHCARE COMMON PROCEDURE CODING SYSTEM (HCPCS) CODES



USED IN:

USED FOR:

Blood Banks, Labs, Donor Rooms, Plasmapheresis, Apheresis

Compression Bandage

Neonatal Intensive Care, Special Nurseries

Affix monitors to infants (1" smiley prints are popular)

Orthopedic Hand Therapy

Support and compression bandage

Radiology, MRI, IV Therapy

Hold IV's inplace

Burn Centers

Pressure bandage to promote circulation and healing

Occupational and Physical Therapy

Support bandage, edema control & finger immobilization

Operating Room

Vascular post-operative wrap securing drapes, tubes and equipment.
Knee and shoulder arthroscopy, total knee post-operative dressing

Dermatology

Compression bandage, fixing bandage

Orthopedics

Leg ulcer wrap in conjunction with Unna boot as an overwrap

Pediatrics

Compression bandage (prints/colors are popular)

Podiatry

Compression, fixing bandage

Dialysis Units

Holding IV's and tubes

Hemodialysis

Compression bandage

Plastic Surgery

Wrap to control swelling and reduce bruising

Product	Size	HCPCS Code	
CoFlex®	1" x 5 yds.	A6453	
CoFlex® Med	1.5" x 5 yds.		
CoFlex® NL	2" x 5 yds.		
CoFlex® LF ²	3" x 5 yds.		
CoFlex®	3" x 5 yds.	A6454	
CoFlex® Med			3" x 5 yds.
CoFlex® NL			4" x 5 yds.
CoFlex® LF ²			4" x 5 yds.
CoFlex®	6" x 5 yds.	A6455	
CoFlex® Med			6" x 5 yds.
CoFlex® NL			6" x 5 yds.
CoFlex® LF ²			6" x 5 yds.
#199 Medical Tape	.5" x 10 yds.	A4450	
#200 Medical Tape	1" x 10 yds.		
#201 Medical Tape	1.5" x 10 yds.		
#201 Medical Tape	2" x 10 yds.		
Moleskin #40	2" x 5 yds.	A9270	
Moleskin #41	9" x 4 yds.		
Moleskin #41	12" x 5 yds.		

Centers for Medicare & Medicaid Services (CMS) has verified that the HCPCS codes listed above have been assigned to Andover Healthcare, Inc.

Updated July 2015

Applications

INFORMATIONAL RESOURCE



MILLIKEN HEALTHCARE

9 FANARAS DRIVE, SALISBURY, MA 01952

PHONE: 978.465.0044 TOLL FREE: 800.432.6686

FAX: 978.462.0003

www.andoverhealthcare.com / healthcare.milliken.com